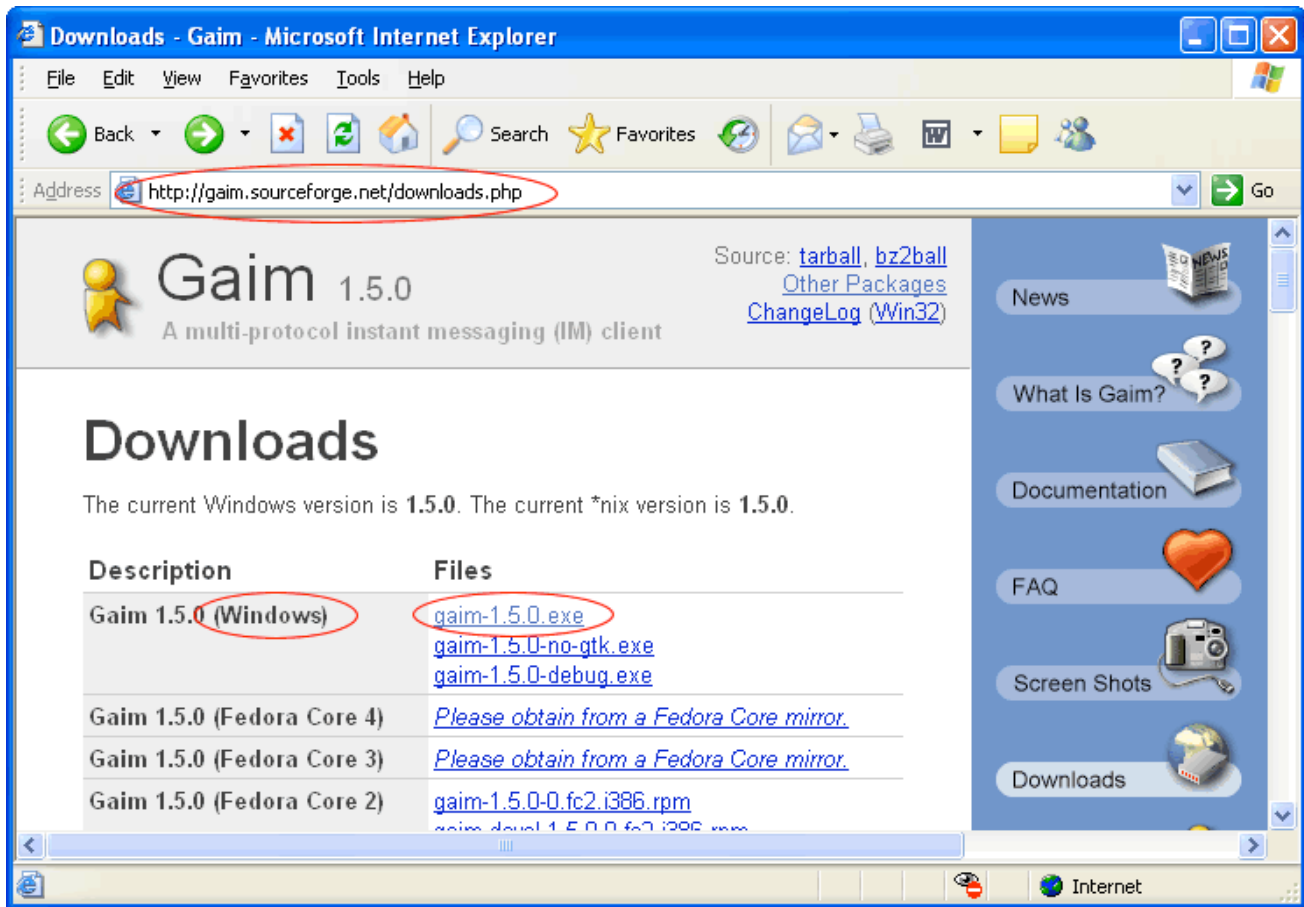


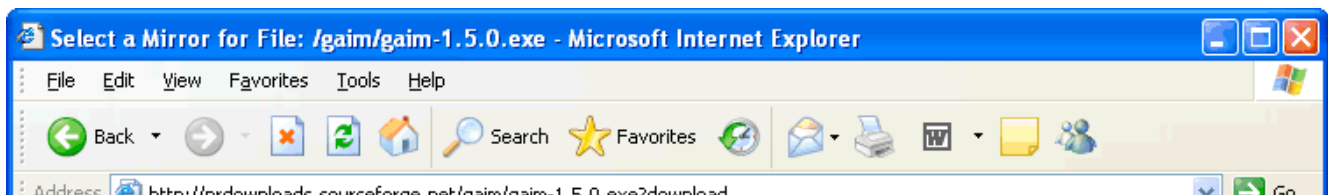
# Installing the Gaim chat client on a Windows XP Machine and connecting to the Mentor Chat.

This document will show you how to access the NetMath mentor chat using a Windows XP client.

To start, you need to install and configure Gaim. Go to <http://gaim.sourceforge.net/downloads.php>. You will want to download the latest Windows version. In October, 2005, when this guide was created, the latest version was **gaim-1.5.0.exe**.

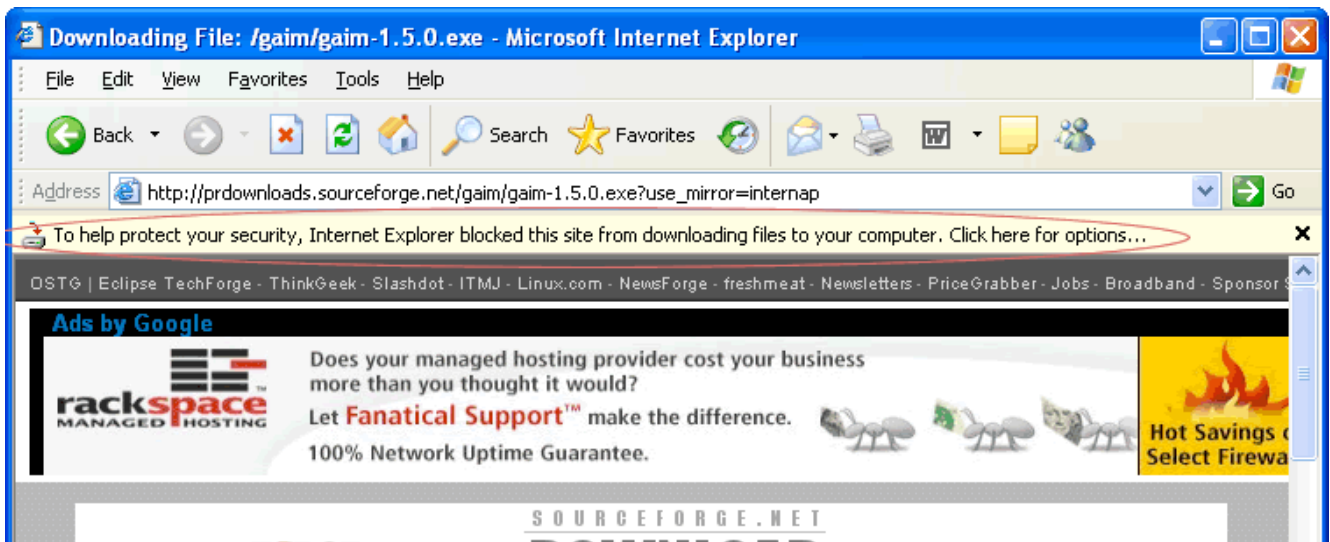


After clicking on the file link, it will ask you to choose a server. Choose a server somewhat close to where you are, and click on the icon under the Download column.



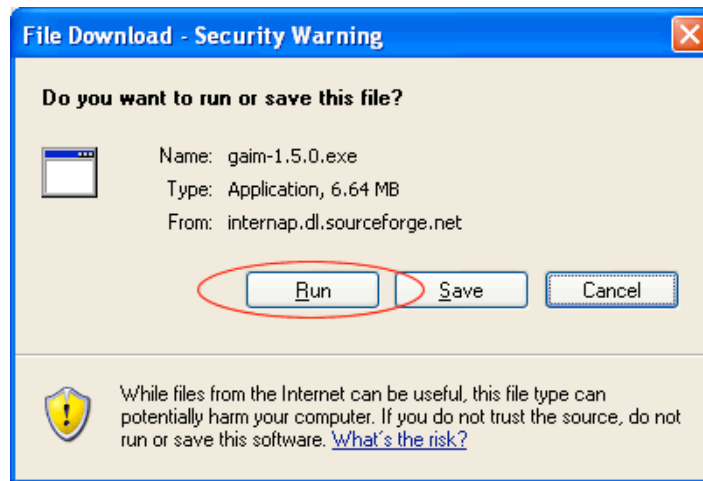


Depending on your security settings, the file may or may not start downloading immediately. If you wait 5 or so seconds and it does not download, click on the download link on the next page.





Again, depending on your security settings, Internet Explorer may ask you what you want to do with the file. Click the "Run" button. **If this dialog does not come up**, and the file downloads without installing, you will need to find the file on your computer and start it up manually.



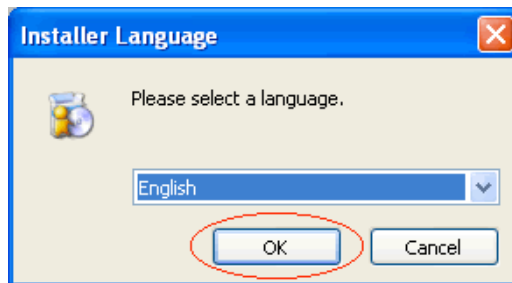
In rare cases you will get an error after it is done downloading. Check the [Troubleshooting](#) section at the end of this document for more information.

When the installer has finished downloading, you may get a dialog box like this. Press the "Run" button to start the installation of the software.

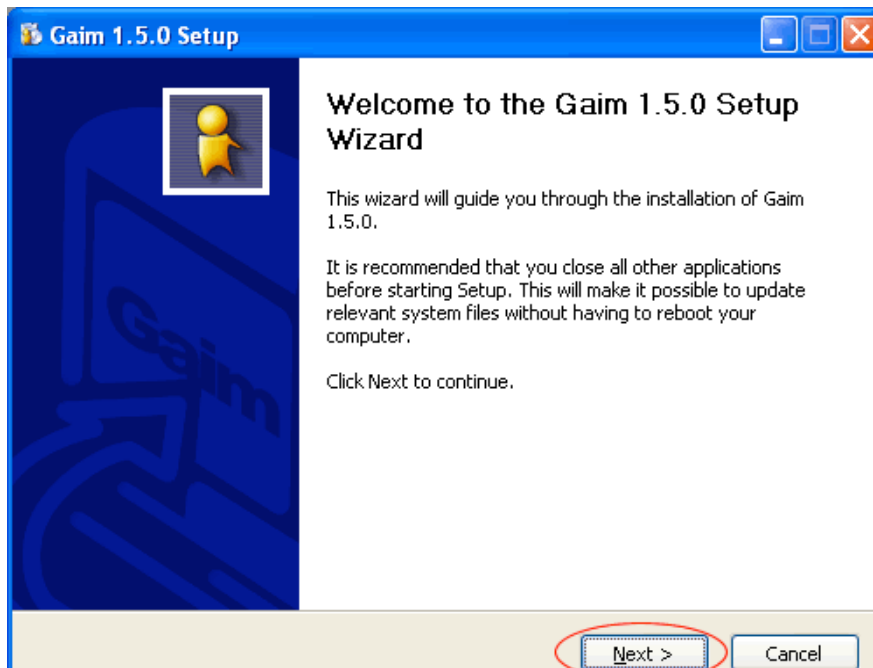




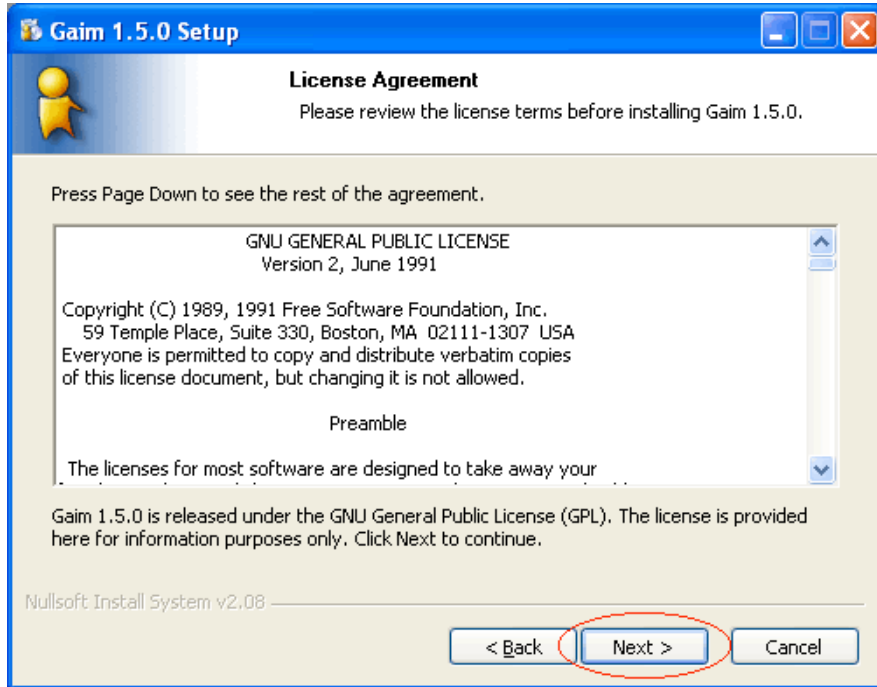
Choose the language you would like to use during the installation process, and press "OK". The rest of this document provides instructions assuming you choose "English".



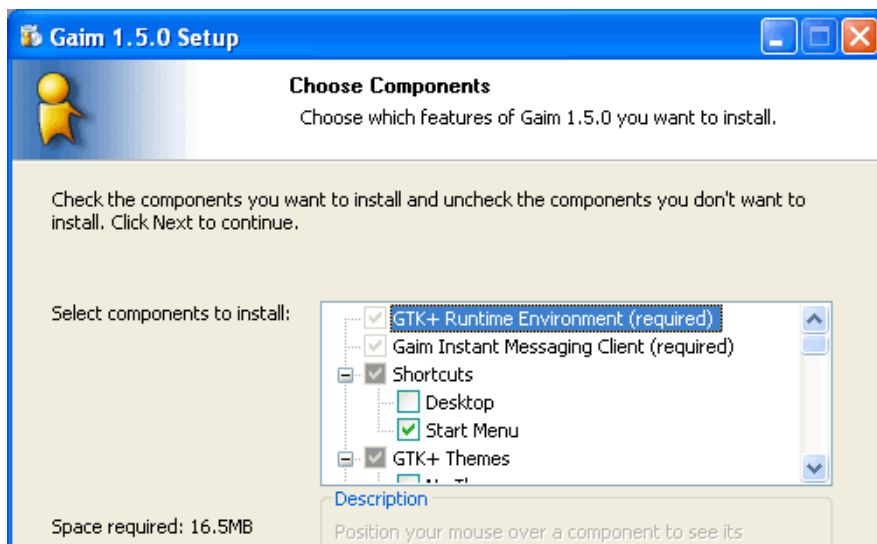
Press the "Next >" button to begin installation.

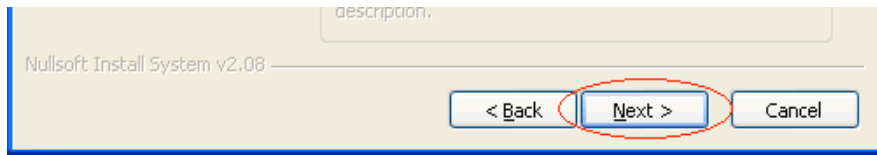


Read the License Agreement, and determine if you agree with the license terms and conditions. If you agree with the agreement, press "Next >".

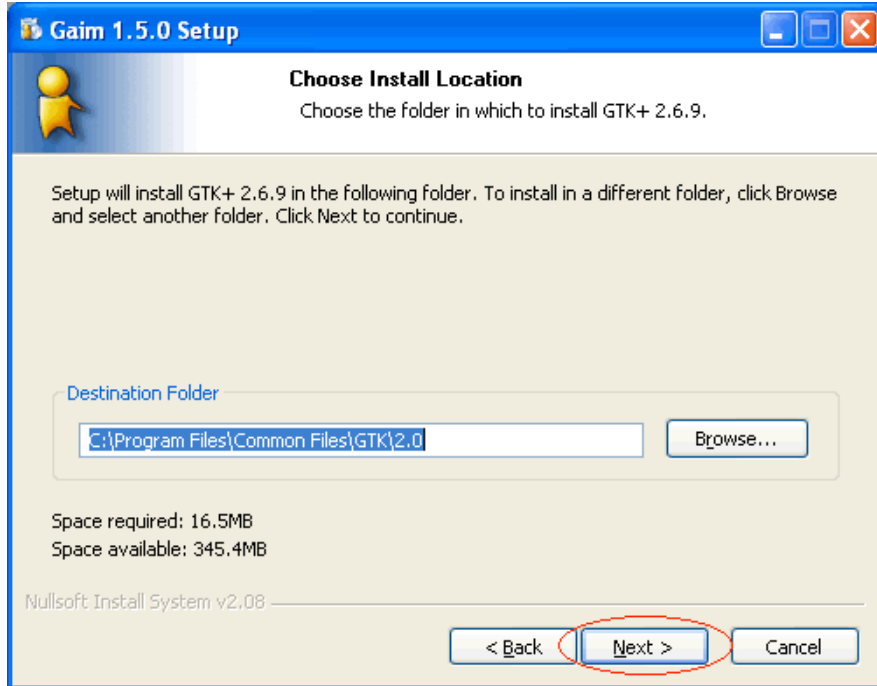


Choose the components to install. The first two options ("GTK+ Runtime Environment" and "Gaim Instant Messaging Client") are required. The other options can change the look of the chat client and/or the languages supported in the user interface. We suggest you make no changes to the default options, and click "Next >".

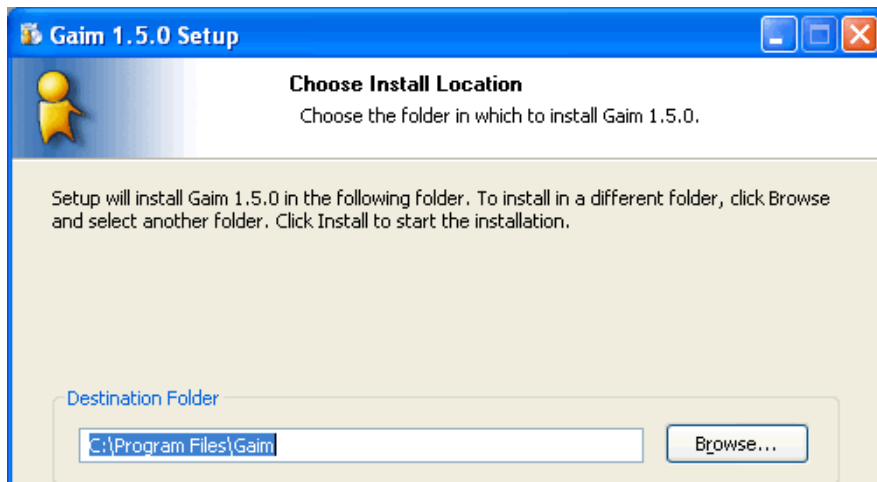


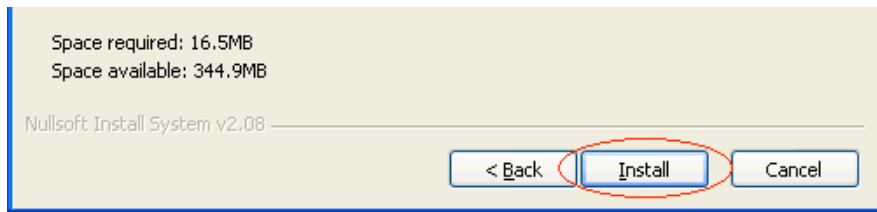


Choose a location to install GTK+. This is a set of libraries required to run Gaim - you cannot install it without these libraries. We recommend you accept the default, and press the "Next >" button.

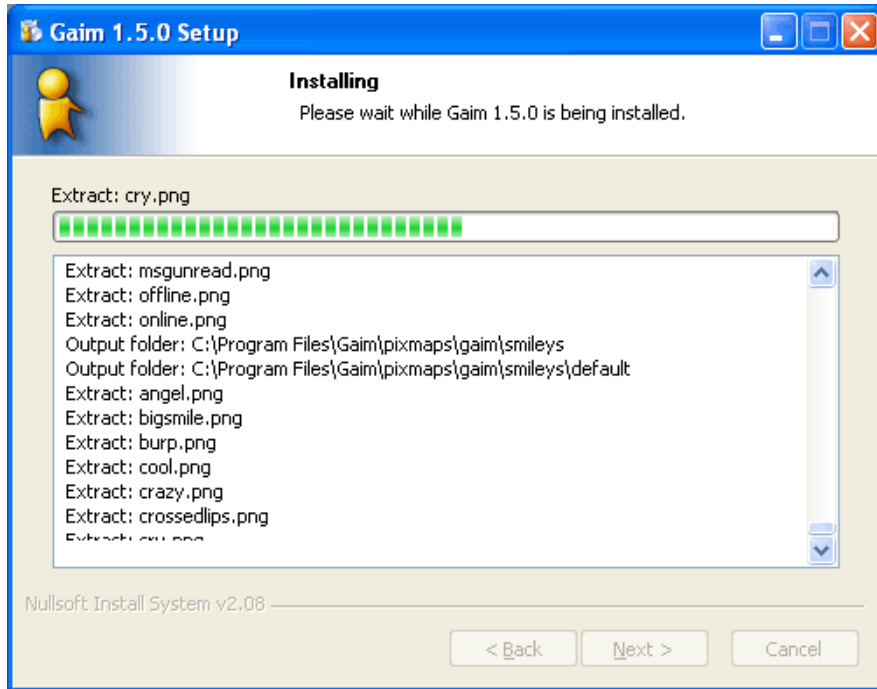


Choose a location to install the Gaim chat client. We recommend you accept the default, and press the "Next >" button.

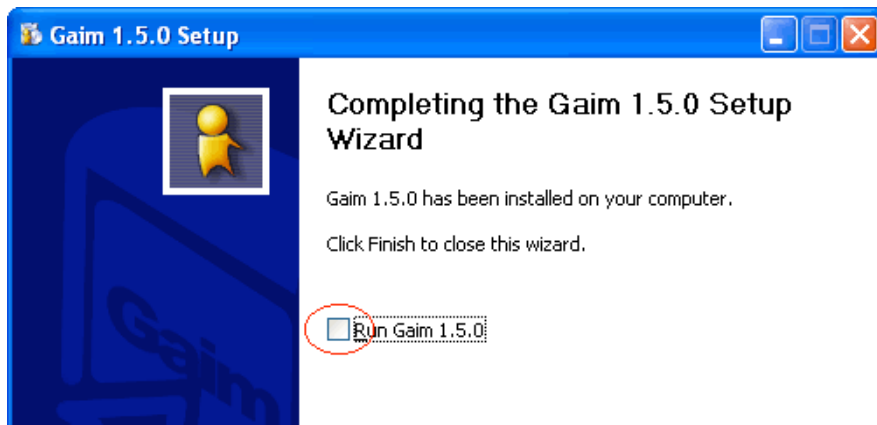


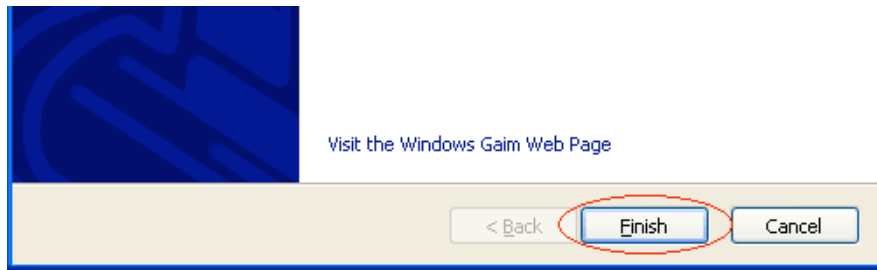


A status window will pop up while it is installing Gaim. This may take a few minutes.

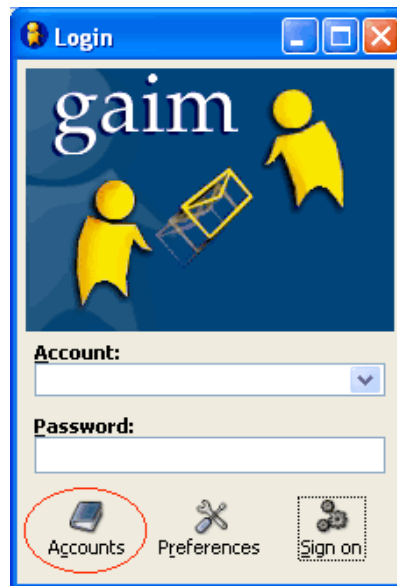


When installation is complete, you will get a message like this. You may click on the box, and then click "Finish" to run Gaim.

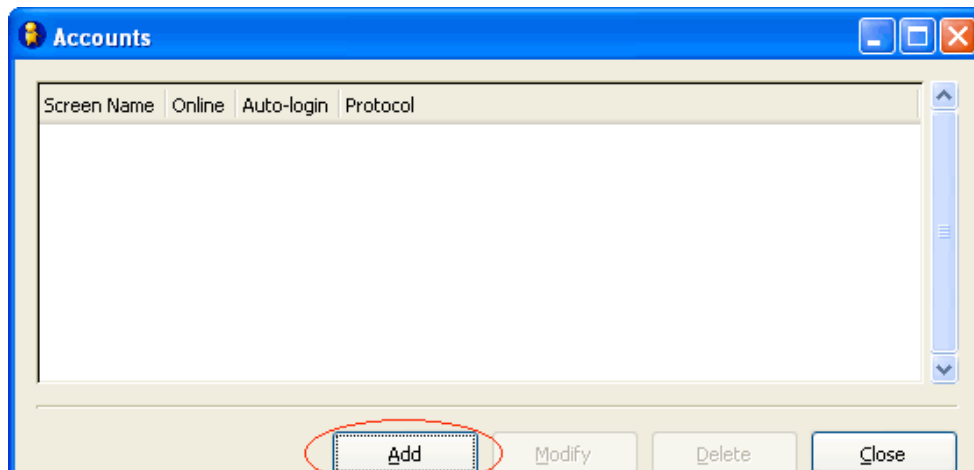




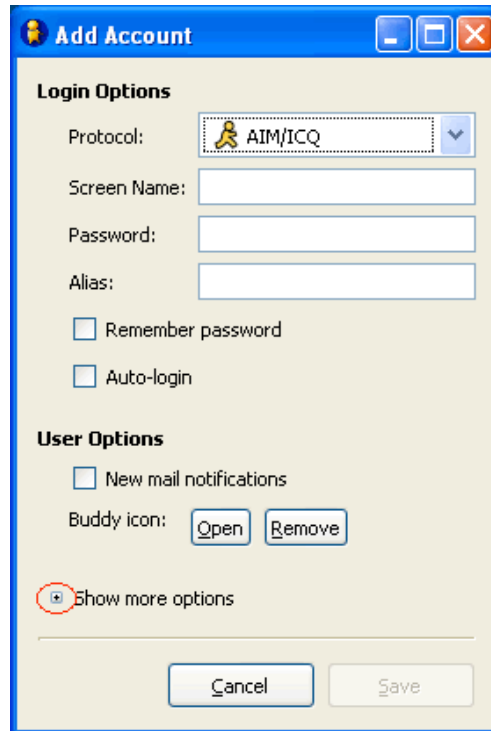
This is the window on top when Gaim starts. There may be several other windows on your screen as well - don't worry about them for now. Click on the "Accounts" button to set up your Netmath chat account.



Now you need to add the information to set up the connection to the Netmath chat server. Click on the "Add" button.



The Add Account window pops up. First, we need to show all the parts of this window. Press the tiny little "+" button next to the "Show more options" label at the bottom of the window.

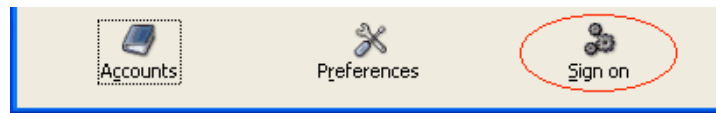


Now that we have all of our entry fields visible, let's enter our information. There is a lot here, so be careful to follow the instructions.

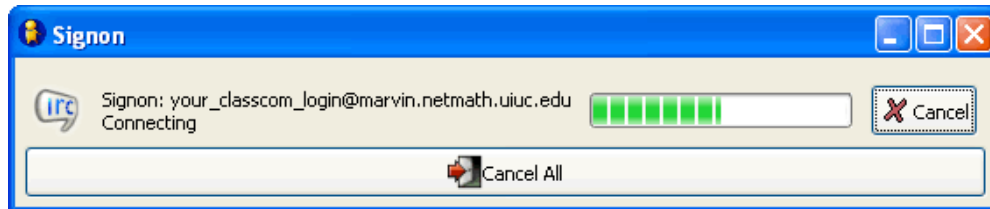
1. The Protocol should be "IRC". Choose this from the drop-down list.
2. Your Screen Name should be the same as your classcom login name.
3. The server should be "marvin.netmath.uiuc.edu". Other instructions have this as "irc.netmath.uiuc.edu", which also works.
4. Leave the Password field blank.
5. The Alias is used to identify this configuration to you. Use whatever text is most helpful to you, though we recommend "Mentor Chat" or "Netmath Chat".
6. Click on the "Auto-login" check box to log in to the mentor chat every time you start Gaim.
7. Port should be 7000.
8. Leave Encoding as whatever the initial default value is.
9. Username should be the same as your classcom login name, as above under Screen Name.
10. Real Name should be your real first and last name.
11. Do not change the Proxy type field.

After entering this data, press the "Save" button.

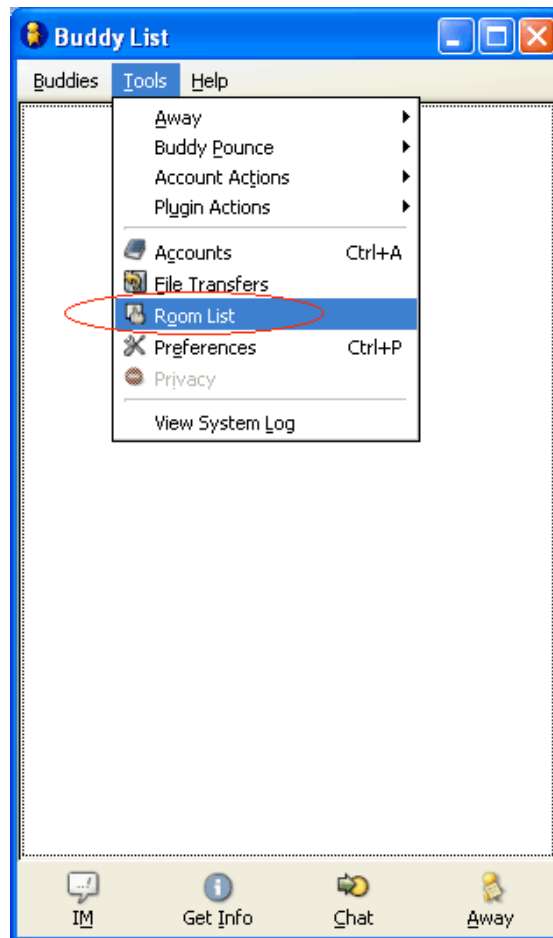
Now that you've set up your account, it is time to connect to the Netmath chat server. Press the "Sign on" button in the Login window.



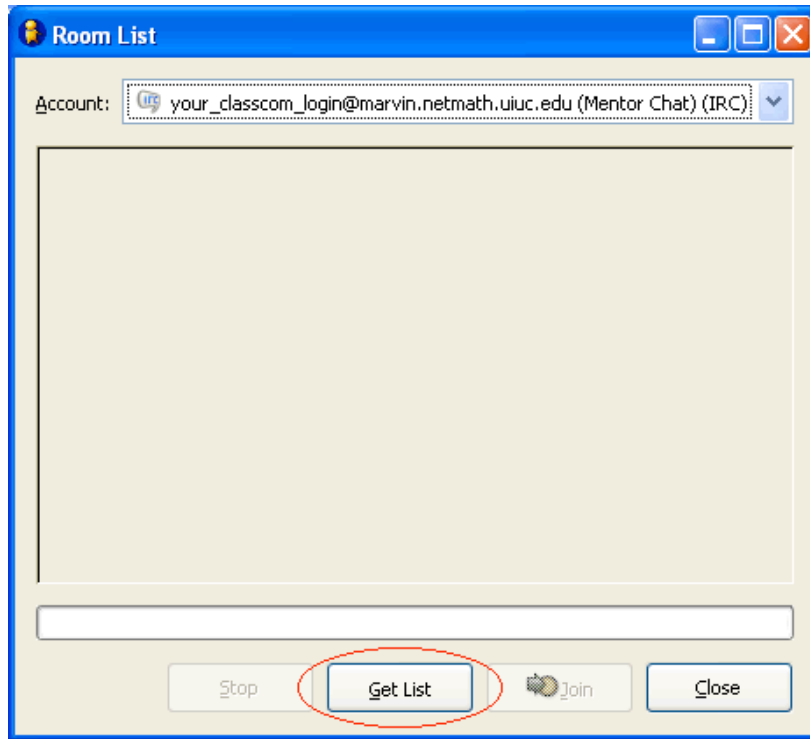
Now Gaim spends a lot of time trying to connect. **You may have to wait as long as 2 minutes** until the next window pops up, so be patient!



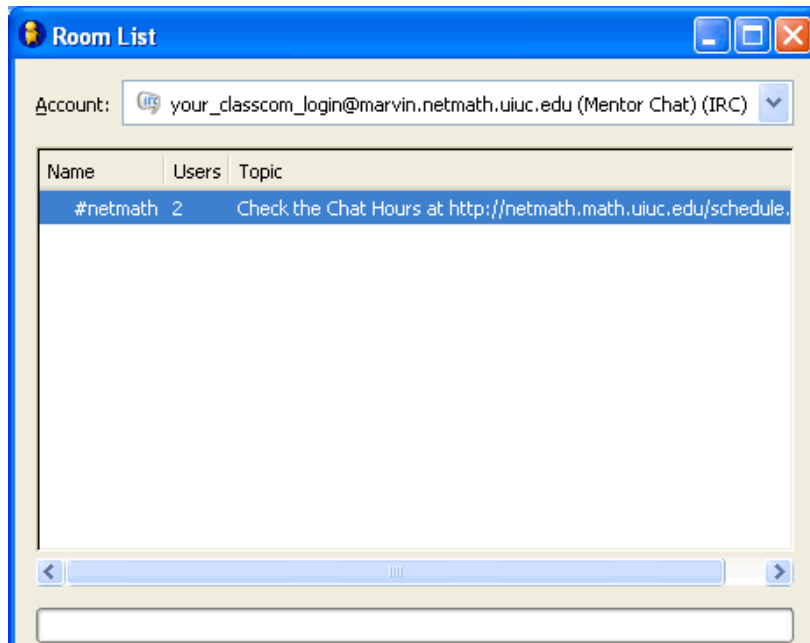
After the long wait, you'll get the main Gaim window. We have logged into the chat server, now we just need to connect to the "channel" where the mentors are waiting to help you out. From the "Tools" menu, choose "Room List".

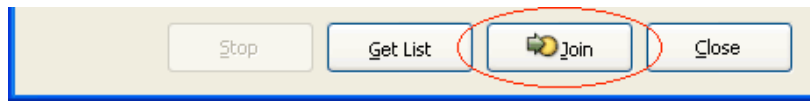


In the Room List window, press the "Get List" button.

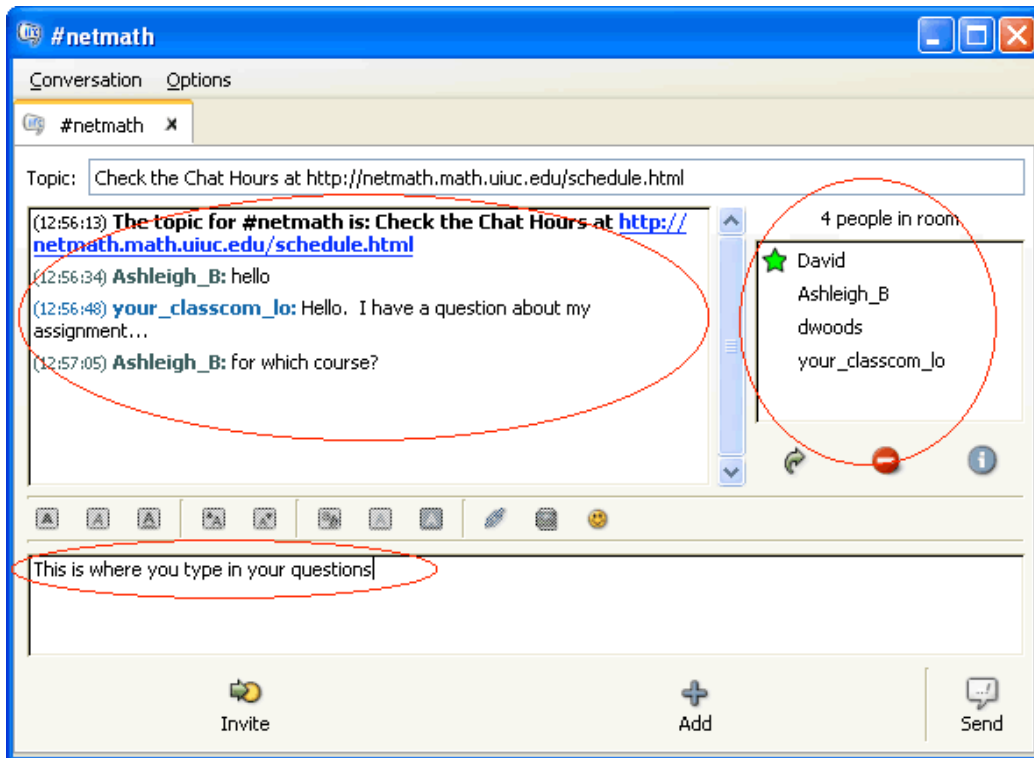


Almost there! You want to be in the "#netmath" channel. Select it in the list box, and press the "Join" button.





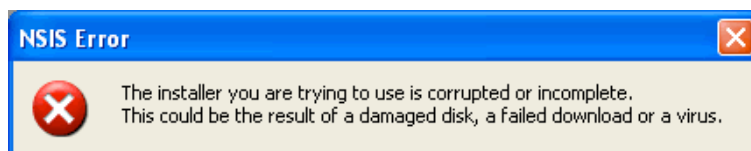
Now you're in the chat room, and can talk to the mentors. You type your questions in the bottom area, and hit "Enter" on your keyboard to send your messages. The people online are shown in the top right window, and the running conversation transcript is shown in the top left window.

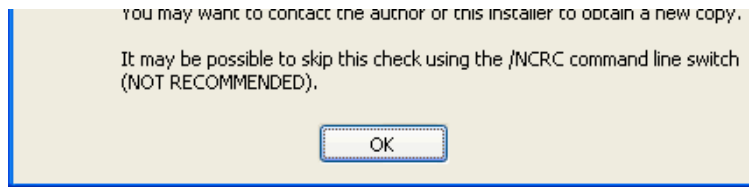


That should be all you need! Happy chatting!

## Troubleshooting

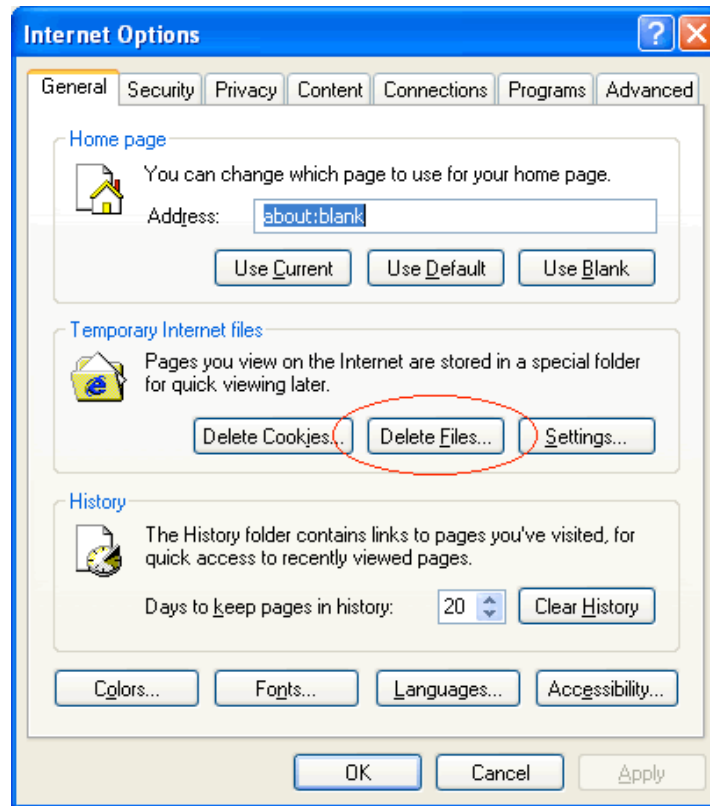
Users have reported problems with incomplete downloads. In rare cases, after downloading the installation file you may get the following error message:





If this happens, try to download the file again. If you get the error message a second time, you may need to clear your "Temporary Internet files" before you can download a good version. In Internet Explorer, go to the "Tools" menu and choose "Internet Options...". You will get a dialog box like the one below.

Click on the "Delete Files..." button, and click "OK" on the confirmation dialog that pops up. Then you can try downloading the client again.



[Return to top.](#)